

RESEARCH
GENERAL

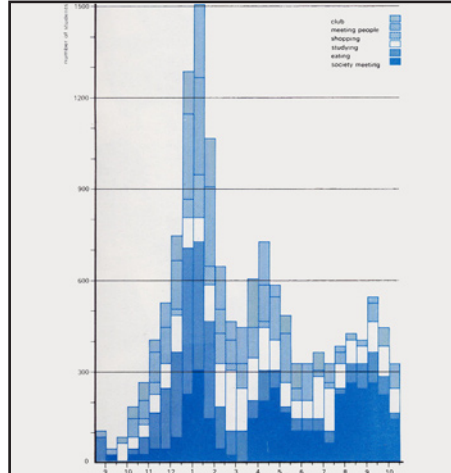
We have carried out research programs for federal, provincial and local governments, as well as public and private agencies. We focus primarily on environmental, social and physical form areas.

We have found that the research work informs the architectural and planning practice, the practice provides focus and relevance to the research work, and both feed and reinforce the teaching.

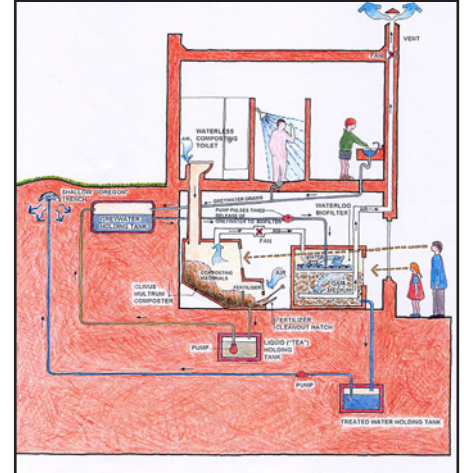
The firm's pioneering work in environmental design both depends on and generates research, from passive solar and alternative energy technologies to the shaping of ecologically sound communities.

In the social field, we believe that the harnessing of social capital needs to accompany considerations of physical capital. Our areas of special interest are the housing and service needs of community groups, low-income families, the elderly, native peoples and special needs populations.

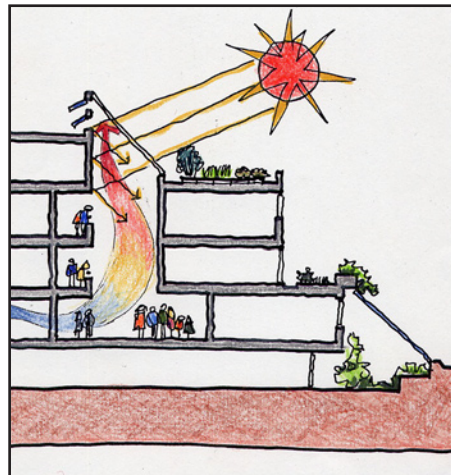
The ongoing exploration of theoretical physical form configurations has led the firm to some innovative yet practical proposals at all scales of building and community design. These include the possible relationships of built form to density, open space (from greenways to urban agriculture and rooftops), economics, transportation, and community livability, health and safety. Once a building or complex has been built, we like to continue to monitor its performance through post occupancy studies.



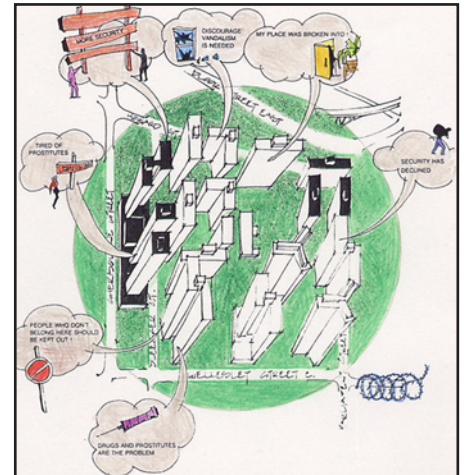
STUDENT UNION USE SURVEY



ALTERNATIVE WASTE TREATMENT



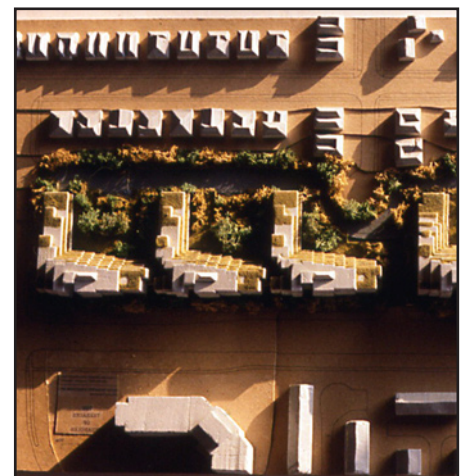
ENERGY CONSERVATION STRATEGIES



SOCIAL ANALYSIS, HIGH DENSITY LIVING



RURAL DEVELOPMENT ALTERNATIVES



URBAN DENSITY STUDIES